

Broken Bar M Ranch & Chrisman Family Cattle

2012 Private Treaty Bull Offering

JEREMY & GAIL MARTIN
7607 N. Sand Rd.
Hershey, NE 69143
308-325-3287
jeremy@broken-mranch.com

TRAVIS & KELLI CHRISMAN
72454 Ave. 341
Wauneta, NE 69045
308-883-6781
tchrisman@chrismancattleservices.com

JOSH CHRISMAN
402-366-2289

We are very excited to bring you this set of bulls in a joint offering with Broken Bar M and Chrisman Family Cattle. We have been working together for over seven years now and it has become evident that we have closely aligned ethics and breeding philosophies. Chrisman Family Cattle maintains January calving herd and a fall-calving herd, while Broken Bar M cows calve in the spring.

The genetics from our programs are similar, but there are enough differences in bloodlines to create some outcrossing options for you. Remember too, that we offer volume and repeat customer discounts. We ask you to consider bulls from both programs. The bottom line is that you get the bull or bulls that will work best for you.

In short, our breeding philosophy is to keep it simple and let mother nature do most of the sorting for us. The cattle must be born easily and grow fast. The cows must be problem free with great feet and udders and most of all they have to be fertile. The majority of our Angus cattle are selected with an emphasis on maternal traits with optimum levels of performance. If you are needing extra growth and muscle we think the SimAngus hybrid bulls will better suit your needs.

It is our responsibility to cull these cattle aggressively, so that you don't have to. Purchase these bulls with confidence. They are FULLY GUARANTEED and will be delivered free of charge. If there is anything wrong with your purchase, let us know right away. We will make it right. We plan to earn your business for the long term.

Please call Travis at (308) 883-6781 or Jeremy at (308) 325-3287 to discuss the bulls and set up a time to look through them. The bulls are located near Lexington at Four Plus Feeders. We appreciate your business and take the role of being your seedstock supplier very seriously. See www.broken-mranch.com for updates.

Thank you,

Jeremy, Gail, Chase, & Regan Martin
The Chrisman Family



Gail, Chase and Regan Martin



Regan, Chase and Jeremy Martin



Travis, Kelli, Gayle, Rick and Josh Chrisman

EXPLANATION OF TERMS

CED BW WW YW Milk Marb RE

Calving Ease Direct (CED), is expressed as a difference in percentage of unassisted births, with a higher value indicating greater calving ease in first-calf heifers. It predicts the average difference in ease with which an sire's calves will be born when he is bred to first-calf heifers.

Birth Weight EPD (BW), expressed in pounds, is a predictor of a sire's ability to transmit birth weight to his progeny compared to that of other sires.

Weaning Weight EPD (WW), expressed in pounds, is a predictor of a sire's ability to transmit weaning growth to his progeny compared to that of other sires.

Yearling Weight EPD (YW), expressed in pounds, is a predictor of a sire's ability to transmit yearling growth to his progeny compared to that of other sires.

Maternal Milk EPD (Milk), is a predictor of a sire's genetic merit for milk and mothering ability as expressed in his daughters compared to

daughters of other sires. In other words, it is that part of a calf's weaning weight attributed to milk and mothering ability.

Marbling EPD (Marb), expressed as a fraction of the difference in USDA marbling score of a sire's progeny compared to progeny of other sires.

Ribeye Area EPD (REA), expressed in square inches, is a predictor of the difference in ribeye area of a sire's progeny compared to progeny of other sires.

We realize there are additional EPDs and indices available, and would be glad to share this information with you for any of the bulls. The traits listed in the catalog are the individual traits most economically important to the majority of our customers.

BR - birth weight ratio **NR** - nursing (weaning weight) ratio

YR - yearling weight ratio

CAREFULLY BRED

The responsibility of being your genetic supplier is one we take very seriously. We know you can not afford mistakes, neither can we. While we may not use all of the trendy new bulls, you can be assured the genetics we provide will be time-tested and have met our approval. We do use some young bulls, but most often they will be backed by teenage cows with impeccable production records in our herds. We do not have the time nor patience to put up with problems, and we do not think you should have to either. We expect the daughters of these bulls to be the best cows you have ever had, and the sons to be good-doing feeder cattle that generate a lot of buyer interest. In fact, any time you have calves for sale, let us know and we will work hard to help you get top dollar.

CORRECTLY DEVELOPED

In keeping with our belief that problems are a waste of time, we strive to develop these bulls in a manner which will insure their libido, soundness, and longevity. We grow the bulls on high-roughage, low-starch rations with adequate protein and energy to have them ready to breed cows - but without getting them too fat. We know these bulls will tend to business because we use them ourselves, and because we hear from you that the bulls are high-libido breeding bulls that get the job done. They will still lose some weight, but they won't simply melt, they will work it off looking for cows to breed - and more importantly they will last a long time.



COMPLETELY GUARANTEED

We stand behind them 100%, no half-credit replacement policy, no backing out - if your bull is injured during the first breeding season you get full credit, a replacement bull, or your money back.

OUR GUARANTEE IS SIMPLE

We guarantee the bulls against injury or death during the first breeding season. We also guarantee your satisfaction with the bull. If for any reason the bull is not satisfactory, is injured, or dies, you receive credit for the purchase price less any salvage value.

Coming two-year old bulls grazing cornstalks this winter



Why Emulation EXT Influence?

Along with proven calving ease, growth, marbling, and maternal - they excel for traits not measured by EPDs



- Outstanding calf vigor & survivability
- Legendary teat and udder quality
- High-libido breeding bulls
- Strong maternal instinct
- Outstanding longevity
- Breed-leading fertility

N Bar Emulation EXT, his influence can be found throughout the offering. EXT is one of the most prepotent sires in the history of the breed. He has stood the most important test of all, the test of time.



JGM Utmost 8XS14 is a Sure Thing son out of the same cow as Snipe Hunt, his grandam is the dam of Special Reserve and Trifecta. Pictured as a coming two-year-old, he has surpassed our expectations. He sired nearly 40 calves as a yearling in a multi-sire pasture, and we retained 17 daughters, selected before the DNA results were back - they made the sort on their own merit. He is easy-going but an aggressive breeder. He has bred our cows, cleaned up cows for our friends at Rousey Simmentals and covered fall cows for a neighbor. We think his sons are really good.

He is a lot better bull than I am photographer, so you will have to look at these sons to appreciate what we think are some of the best cattle we have raised.

614S, 8X1 & 9V1 Maternal brothers out of 796C



JGM Sure Thing 614S, his influence is strong in the offering, sire of OXS1, OXS3 and OXS9



CFC Genesis 8X1, full brother to JGM Sure Thing 614S, raised by Chrisman Family, co-owned with Sinclair



CFC First Step 9V1, grandson of EXT raised by Chrisman Family, sire of 1V4

JGM Xodus 0U9

Purebred Angus • Calved 3/14/10

JGM Sure Thing 614S

JGM UTMOST 8XS14

J G M Lady Erika L S 016

O C C Emblazon 854E

JGM QUEEN MOTHER EMB 408P

E&b Queen Mother 035

CED	BW	WW	YW	Milk	Marb	RE
8	0.4	39	67	11	.02	.31

Heifer bull. Solid ratios across the board, out of an easy-keeping Emblazon dam.

JGM Xtension 0U17

Purebred Angus • Calved 3/21/10

JGM Sure Thing 614S

JGM UTMOST 8XS14

J G M Lady Erika L S 016

H A Power Alliance 1025

JGM MERLE PA 611S

E&b 409 Lady Duke 701

CED	BW	WW	YW	Milk	Marb	RE
4	2.1	38	65	14		

Long, thick, and very correct, he has performed well all the way and is backed by a really nice cow.

JGM X Axis 0U20

Purebred Angus • Calved 3/22/10

JGM Sure Thing 614S

JGM UTMOST 8XS14

J G M Lady Erika L S 016

T K Patriot 1118B

JGM CHRISTY LASS PT 316N

T A R Primestar Sandy 9780

CED	BW	WW	YW	Milk	Marb	RE
6	0.6	41	73	16	.10	.18

Heifer bull prospect that ratioed 105 for weaning, 104 for yearling and 106 for ribeye, he is hard to miss.

JGM Xemplary 0U25

Purebred Angus • Calved 3/28/10

JGM Sure Thing 614S

JGM UTMOST 8XS14

J G M Lady Erika L S 016

O C C Legend 616L

JGM MERLE LGD 501R

E&b 409 Lady Duke 701

CED	BW	WW	YW	Milk	Marb	RE
5	1.6	37	60	11	.18	.35

High density, thick made bull from a Legend cow that everyone picks out. He will sire phenomenal daughters and thick-butted steers. Scanned 106 for REA and 108 IMF ratios.

JGM Xecute OXG3

Purebred Angus • Calved 3/7/10

N Bar Emulation EXT
O C C GREAT PLAINS 943G
Dixie Erica of C H 1019
Shoshone Mandel 623 GFAR
K N M JUANADA PRIDE 818
K N M Juanada Pride 645

CED	BW	WW	YW	Milk	Marb	RE
7	0.3	37	62	19	.15	.10

Heifer bull with extra length and a 103 weaning ratio, calving ease on Great Plains genetics is outstanding.



Sinclair K BTY 6P78 3G21, dam of OXS9

JGM Xcede OXS1

Purebred Angus • Calved 3/10/10

N Bar Emulation EXT
JGM SURE THING 614S
C M Dixie Erica 796C
O C C Brougham 874B
JGM MISS BONNIE 8B2
G A Lady Sky Stepper

CED	BW	WW	YW	Milk	Marb	RE
3	1.0	37	65	15	.10	.36

Big, stout, and masculine - he ratioed 111 for weaning, 109 for ribeye and looks the part.



"The Keeping Kind" JGM Utmost 8XS14 x OCC Emblazon 854E heifer calf pictured in early September 2010.

JGM Xcel OXS3

Purebred Angus • Calved 3/17/10

N Bar Emulation EXT
JGM SURE THING 614S
C M Dixie Erica 796C
O C C Emblazon 854E
JGM MISS BONNIE 8M3
JGM Miss Bonnie PA 606S

CED	BW	WW	YW	Milk	Marb	RE
3	1.7	43	75	15	.15	.56

Thick, sound moving bull with a huge top. Ratioed 107 at weaning, 101 at yearling, and scanned a whopping 15.6 REA to ratio 122.

C F C Emulation OXS9

Purebred Angus • Calved 8/16/10

N Bar Emulation EXT
JGM SURE THING 614S
C M Dixie Erica 796C
N Bar Prime Time D806
SINCLAIR K BTY 6P78 3G21
Sinclair K Bty 3G21 J231

CED	BW	WW	YW	Milk	Marb	RE
7	-1.3	39	72	17	.42	.17

Heifer bull. FALL BORN. A solid linebred Emulation calving ease bull that offers excellent growth performance as well. Starting at 72# this bull went on to post weaning and yearling ratios of 110 and 107 respectively. His productive dam records 3 @ 97 birth ratio, 108 NR and 3 @ 107 YR.

C F C Ritolation 1V4

Purebred Angus • Calved 1/18/11

N Bar Emulation Ext A1747
C F C FIRST STEP 9V1
C M Dixie Erica 796C
Sinclair Rito Legacy 3R9
C F C CLOVA PRIDE 8RL2 6PF14
Sinclair C Pride 6PF14 J109

CED	BW	WW	YW	Milk	Marb	RE
6	-0.4	34	67	19		

Heifer bull. Sired by the top performance bull of our 2009 crop, 1V4 offers a nice combination of calving ease and performance with a BW of 73# and a weaning ratio of 103. His sire will see continued use in our herd.



C F C Emulation 1SR1

Purebred Angus • Calved 2/9/11

N Bar Shadow X4124

SINCLAIR SHADOW RIDER 9S34

N Bar Primrose Y3051

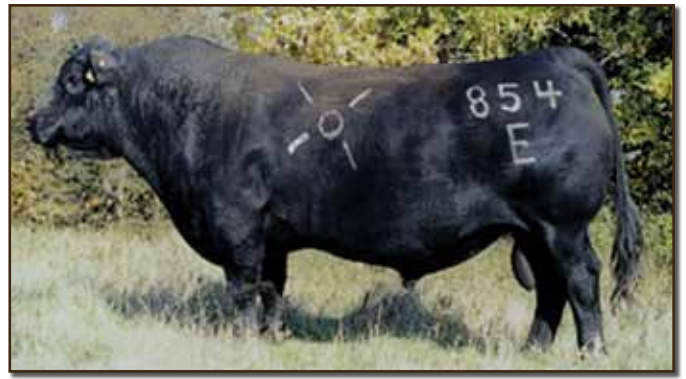
N Bar Prime Time D806

SINCLAIR PRIMROSE 4P31 D011

N Bar Primrose 4324B

CED	BW	WW	YW	Milk	Marb	RE
6	-0.1	38	65	16	.29	-.02

Heifer bull. This linebred calving ease bull will leave you with a tremendous set of replacement heifers. His sire was the \$24,000 top selling bull of the 2010 Sinclair bull sale. Dam has 6 @ 100 NR with 2 daughters in production posting a collective progeny NR of 108. The grandam had 8 calves @ 108 NR and 105 YR.



OCC Emblazon 854E, sire of OM1 & OM3. MGS of 0U9 & 0XS3. Proven sire of tremendous females with superb fleshing ability, mothering instinct and udder quality



N Bar Primrose 4324B, grandam of 1SR1

Sinclair Blkbird 7X57 7078, maternal sister to 1S2 and 1S3, sired by EXT



C F C Shadow 1S2

Purebred Angus • Calved 3/4/11

C F C Shadow 1S3

Purebred Angus • Calved 3/6/11

N Bar Emulation EXT

N BAR SHADOW X4124

N Bar Enchantress 4908

R R Rito 707

RITO 707 OF IDEAL 3407 7078

Ideal 3407 of 1418 076

CED	BW	WW	YW	Milk	Marb	RE
3	1.1	37	59	14	-.14	.17

These full brothers (1S2 & 1S3) are younger ET calves that are the result of embryos we put in up in Wyoming. They did very well and weaned off at 731 and 680# respectively. Their dam is a full sister to Rito 707 of Ideal 3407 7075, the sire of the top selling group at the 2010 SAV bull sale in North Dakota. Their sire N Bar Shadow is recognized by many as best female making son of EXT to date. Pair these guys up if you want to make a strong set of cows.

JGM Xponent OM1

Purebred Angus • Calved 2/27/10

D H D Traveler 6807

O C C EMBLAZON 854E

Dixie Erica of C H 1019

K N M Emulation 521

K N M MAYFLOWER 834

K N M Mayflower 265

CED	BW	WW	YW	Milk	Marb	RE
7	1.6	42	66	14	.06	.07

Heifer bull. Long, attractive Emblazon son with a 76 lb actual birthweight, 607 adjusted weaning weight.

OM1 & OM3

are 3/4 Brothers

JGM Xpansion OM3

Purebred Angus • Calved 3/5/10

D H D Traveler 6807

O C C EMBLAZON 854E

Dixie Erica of C H 1019

K N M Emulation 521

K N M QUEEN 852

K N M Queen 635

CED	BW	WW	YW	Milk	Marb	RE
7	1.4	43	68	16	.16	.33

Heifer bull. Thick, soggy Emblazon son that ratioed 97 for birth (actual weight 74 lb), 105 for weaning, 106 yearling, and 111 for IMF



JGM Ultimate 8A2, Power Alliance son out of 796C donor, we lost the bull early in life to an accident but the few progeny we have are exceptional quality

JGM Xephyr OAU1

Purebred Angus • Calved 3/21/10

H A Power Alliance 1025

JGM ULTIMATE 8A2

C M Dixie Erica 796C

O C C Exclamation 785E

KOUPALS PATTY 023

Beeiland Patty K440

CED	BW	WW	YW	Milk	Marb	RE
0	2.7	29	58	22	.23	.28

Big and stout, out of a really solid old cow, his EPDs far underestimate the performance he will sire. Ratioed 102 for yearling and scanned good too, 102 ribeye ratio and 109 for IMF.



JGM Lady Bonnie 353N, daughter of Power Alliance pictured at 6 years of age

JGM Xenon OAU4

Purebred Angus • Calved 4/8/10

H A Power Alliance 1025

JGM ULTIMATE 8A2

C M Dixie Erica 796C

H A Image Maker 0415

JGM MISS BONNIE IM 601S

JGM Miss Bonnie EMB 405P

CED	BW	WW	YW	Milk	Marb	RE
8	0.1	45	79	25	.27	.20

Heifer bull. Ratioed 95 for BW, 107 WW, 103 YW, and 110 IMF, dam has avg BW ratio of 95 and avg WW ratio of 106 and is one of the best cows we own.



HA Power Alliance 1025 - Sire of JGM Ultimate 8A2 and MGS of OU17



CM Dixie Erica 796C, dam of JGM Utmost 8A2, also the dam of JGM Sure Thing 614S and CFC First Step 9V1 who also have sons in this offering.



OCC Exclamation 785E, MGS of OAU1





Cole Creek Black Cedar 46P - Proven total performance sire produced in the real world short grass country of Southern Montana by Greg Golden at Cole Creek Angus where they have been producing Angus cattle for 50 years. They run their cowherd tougher than any registered operation I have ever seen and still demand performance. We want our cows to bring in the pounds on low quality forage and think this bull will help us do that. You will see several sons and grandsons in the years to come.



Sinclair C Pride 6PF14 - Dam of 1C3



Rito Revolve OR5, sire of 1R1



N Bar Queen Mother 9955F - Dam of 1R1, pictured at 15

C F C Cedar Chest 1C1

Purebred Angus • Calved 1/18/11

C H Quantum 6247

COLE CREEK BLACK CEDAR 46P

Cole Creek Clova Juanada 67

Three Trees Alberto 1040

CFC-JGM DIXIE ERICA 796P

C M Dixie Erica 796C

CED	BW	WW	YW	Milk	Marb	RE
8	0.4	43	82	18	.22	.26

Top notch combination of performance, pedigree and kind. A real herd bull prospect. Weaning ratio of 114 and his dam records 4 @ 106 NR and 3 @ 102 YR with a 366 day calving interval. Grandam is our foundation 796C donor cow.

C F C Cedar Plank 1C3

Purebred Angus • Calved 1/20/11

C H Quantum 6247

COLE CREEK BLACK CEDAR 46P

Cole Creek Clova Juanada 67

Sinclair Frisco 2P14

SINCLAIR C PRIDE 6PF14 J109

N Bar Clova Pride G4139

CED	BW	WW	YW	Milk	Marb	RE
7	1.7	42	82	18	.27	.13

Another thick made Black Cedar son. Weaning ratio of 113 out of a no miss cow that records 4 @ 108 NR with a 367 day calving interval. His dam is also the grandam of the 1V4 bull in this offering.

C F C Quarter Master 1R1

Purebred Angus • Calved 1/25/11

R R Rito 707

RITO REVOLVE OR5

Ideal 1456 of 8103 8114

N Bar Emulation EXT

N BAR QUEEN MOTHER 9955F

N Bar Queen Mother 6079

CED	BW	WW	YW	Milk	Marb	RE
-1	3.3	39	77	16	.01	-.13

ET Calf. Donor dam records 7 @ 108 NR and a 370 day calving interval. She is still in production at 16 and has a perfect udder and flawless structure. His sire provides outcross blood for most programs.

WHERE WE'RE HEADED

Pictured below is a halfblood Angus/Fleckvieh Simmental female co-owned by the Chrismans and the Martins. She is the model for our SimAngus females. Stay tuned for more of these good composite bulls. They will offer more muscle and growth than the straight Angus, with the benefit of maternal heterosis on the female side.



85T, Halfblood Angus x Fleckvieh, dam of JGM Ultimate 003

85T pictured at 3 years of age



CFC Eola 930W, another young halfblood Angus x Fleckvieh cow

CFC Paoli 630S, dam of 110Y



CFC Peridot 621S, dam of 031X



OCC Jetfeck 133N, or Jetfeck as we call him, is the result of a long search to find a Simmental based bull that would be moderate framed and add muscle and rib dimension along with solid performance. The nice surprise is that they are very modest in their birthweights. We have daughters in production that are doing a nice job and are easy fleshing. We will continue to use this bull in the future.

EPDs on SimAngus bulls are from the Simmental Association and cannot be directly compared to the EPDs on Angus bulls.

C F C Yankton 102Y

63% Angus - 37% Simmental • Calved 1/15/11

OCC Jet Stream 825J

OCC JETFECK 133N

Miss Arnold C5368

N Bar Emulation EXT A1747

820U

CFCC Sunchaser 536R

CED	BW	WW	YW	Milk	Marb	RE
11	-3.3	25	48	3	.18	.10

Long and stout made bull will great all around performance. Born at 78#, he recorded a weaning ratio of 106. His young dam is off to a great start with 2 @ 108 NR with a 362 day calving interval.

C F C Yukon 110Y

63% Angus - 37% Simmental • Calved 1/22/11

OCC Jet Stream 825J

OCC JETFECK 133N

Miss Arnold C5368

OCC Magnitude 805M

CFC PAOLI 630S

CFCC Paoli 403P

CED	BW	WW	YW	Milk	Marb	RE
12	-3.0	22	46	1	.10	0

Nearly identical performance to 102 with 83# BW and 104 weaning ratio. His dam is the most attractive SimAngus cow in our herd and records solid production of 4 @ 105 NR and 109 YR with a 369 day calving interval. A full brother to this bull sold to Neiman 77 Ranch in 2010.

C F C Yuma 113Y

50% Angus - 50% Simmental • Calved 1/24/11

OCC Jet Stream 825J

OCC JETFECK 133N

Miss Arnold C5368

LMAN King Rob 8621

CFCC SAGEBRUSH ANNY 528R

DMGC Miss King 500E

CED	BW	WW	YW	Milk	Marb	RE
10	-0.2	23	47	4	.01	.09

This is the only RED bull in the offering. He started at 93# and was the heaviest bull at weaning at 667#, which ratioed 104 after adjustment. Dam and grandam have been very solid cows.

C F C Xtra Effort 031X

63% Angus - 37% Simmental • Calved 8/25/10

OCC Jet Stream 825J

OCC JETFECK 133N

Miss Arnold C5368

OCC Magnitude 805M

CFC PERIDOT 621S

CFCC Peridot 404P

CED	BW	WW	YW	Milk	Marb	RE
10	-1.0	26	50	-0.7	.05	.09

FALL BORN, this is the thickest, stoutest bull of the SimAngus group. He had a 95# BW and weaning ratio of 105.



JGM Ultimate 003

75% Angus - 25% Simmental • Calved 3/25/10

JGM Ultimate 8A2

JGM ULTIMATE 003

CM Dixie Erica 796C

OCC Paxton 730P

MFI BLACK LOLITA 7083

MFI Lolita 5142

CED	BW	WW	YW	Milk	Marb	RE
85#	608#					

SimAngus bull with a little more frame, his pedigree is loaded with the best cows on the place.



WE VALUE YOUR BUSINESS

5% discount for purchase of multiple bulls

5% discount for repeat customers

Discounts are additive

EXPLANATION OF BULL AGES

Many of you have probably wondered why we have such a wide range of ages amongst the bulls. These bulls come from 3 separate herds each with similar genetic goals and gene pools.

The Broken Bar M herd consists of approximately 175 April-May calving cows owned and managed by the Martins. In the past, these cows calved in March and April and bulls were offered as yearlings. This is the first group of two year old bulls we have offered, but there will be more to come, we plan to have about 30 of these bulls for you to choose from next year. These bulls are backgrounded on a roughage and distillers ration, go back to pasture as yearlings and are currently running on cornstalks and supplemented with ration. They are ready for heavy use, and should last a long time.

The Chrisman Family cows consist of a 60 head January-February calving herd managed by Rick and Josh Chrisman, and a 90 head fall-calving herd managed by Travis and Kelli Chrisman. The January born yearlings were raised near York, NE. They were weaned in early September and have been fed a complete ration to gain between 2.5 and 3# per day.

The fall born bulls were weaned last March and were backgrounded in a large lot with free choice oat hay and dry distillers as supplement. November 1st they went on a complete ration with the January yearling bulls. They will be 20 months of age come turn out time and ready for heavy service.



Catalog by Chrisman Cattle Services
www.chrismancattleservices.com

BROKEN BAR M RANCH
Jeremy & Gail Martin
7607 N. Sand Rd.
Hershey, NE 69143



BULL INDEX

(tag - page number)

003 - 10	1C3 - 8	OAU1 - 7	OU17 - 4
031 - 10	1R1 - 8	OAU4 - 7	OU20 - 4
102 - 9	1S2 - 6	OM1 - 6	OU25 - 4
110 - 9	1S3 - 6	OM3 - 6	OXG3 - 5
113 - 10	1SR1 - 6	OSX9 - 5	OXS1 - 5
1C1 - 8	1V4 - 5	OU9 - 4	OXS3 - 5